

ORDINANCE NO. 740

AN ORDINANCE OPENING THE ALLEY PREVIOUSLY DEDICATED IN THE PLAT OF CITY SECOND ADDITION, WHICH ALLEY ABUTS LOTS ONE THROUGH SEVEN, INCLUSIVE, CITY SECOND ADDITION IN THE CITY OF GOTHENBURG, DAWSON COUNTY, NEBRASKA; REPEALING ORDINANCES IN CONFLICT HEREWITH; AND PROVIDING FOR AN EFFECTIVE DATE.

BE IT ORDAINED BY THE MAYOR AND CITY COUNCIL OF THE CITY OF GOTHENBURG, DAWSON COUNTY, NEBRASKA, AS FOLLOWS:

Section 1. The alley shown on the plat of the City Second Addition to the City of Gothenburg, Nebraska is hereby declared opened, and the street foreman/ superintendent is directed to cause the same to be opened and improved.

Section 2. The alley in the City Second Addition to the City of Gothenburg, Dawson County, Nebraska, having been previously platted shall be opened and improved without assessment to or payment to any abutting landowner. Provided, however, in all events the limitation in this paragraph shall not restrict the City from assessing future maintenance or improvement costs to property benefited by such maintenance or improvement.

Section 3. This ordinance repeals all ordinances or parts of ordinances in conflict herewith.

Section 4. This ordinance shall take effect from and after its passage, approval and publication as required by law.

Passed and approved this 21st day of March, 2000.

City of Gothenburg, Dawson County,
Nebraska,

Larry Franzen
Larry Franzen, Mayor



ATTEST:

Connie Stull
Connie Stull, City Clerk

APPROVED AS TO FORM:

Michael L. Bacon, City Attorney

RECORDED
DAWSON COUNTY NE

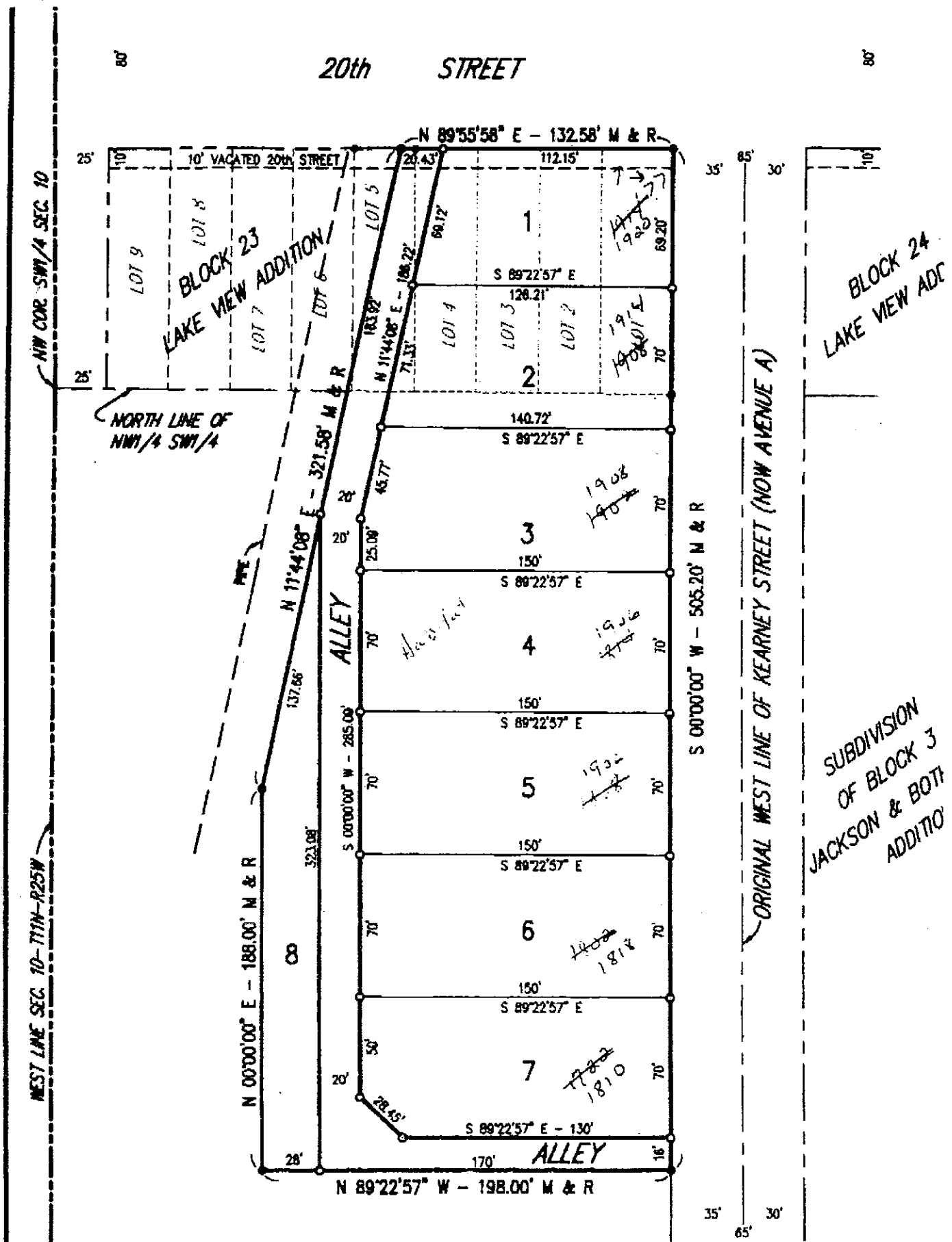
2000 MAY 25 AM 11:15
Inst 2000 - 1903

Ruth H. Meyer
REGISTER OF DEEDS

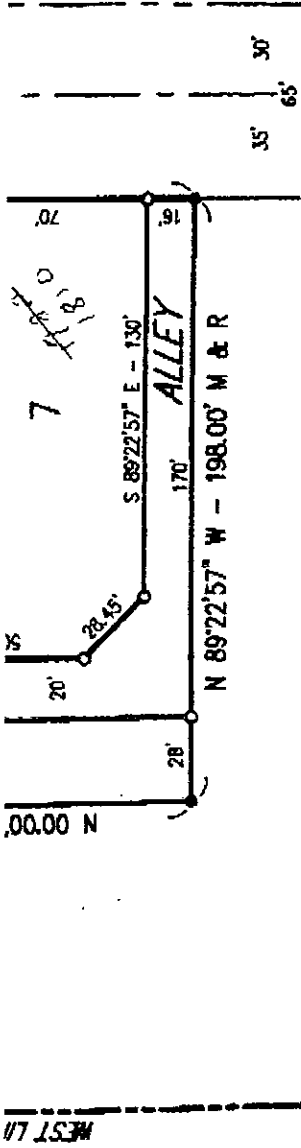
Je 1850
City 2B

21

Inst 2000 - 1903



SITE PLAN



SITE PLAN

LEGAL DESCRIPTION

A tract of land located in a portion of the South 10 ft. (now vacated) of 20th Street, and in Lots 1 through 4 and a portion of Lots 5 and 6, Block 23 of Lake View Addition to Gothenburg and in a portion of the NW 1/4 of the SW 1/4 of Section 10, T11N, R25W of the 6th P.M., all in the City of Gothenburg, Dawson County, Nebraska, described as follows:

Beginning at a point on the North line of the South 10 ft. (now vacated) of 20th Street and on the East line, extended North, of Lot 1, Block 23 of said Lake View Addition; thence S 00°00'00" W (bearing assumed and all other bearings area relative thereto) a distance of 505.20 feet along said East line of Lot 1 and parallel with and 35 feet West of the West line of Kearney Street (now Avenue A) of Jackson and Bothwell's Addition to said City; thence N 89°22'57" W a distance of 198.0 feet along a line parallel with the North line of said NW 1/4 of the SW 1/4; thence N 00°00'00" E a distance of 188.00 feet along a line parallel with said West line of Kearney Street (now Avenue A); thence N 11°44'08" E a distance of 321.58 feet to the North line of said South 10 feet (now vacated) of 20th Street; thence N 89°55'58" E a distance 132.58 feet along the North line of said South 10 feet to the point of beginning, containing 2.05 Acres more or less.

RESOLVED THAT THE PLANNING BOARD SHALL BE AND INHABITANTS AND BE

ATTEST

STATE OF NEBRASKA
COUNTY OF DAWSON
CITY OF GOTHENBURG
1997
IN THE PRESENCE OF

Inst. 2000 - 1903

WEST LN

AUG 29, 1997 • 09:02:20 • G:\Projects\12501009\End-Plot