

ORDINANCE NO. 931

AN ORDINANCE OF THE CITY OF GOTHENBURG, NEBRASKA, AMENDING ZONING REGULATIONS, TITLE XV, CHAPTER 152, SECTION 152.001 AND SECTION 152.016 OF THE CODE OF ORDINANCES OF THE CITY OF GOTHENBURG, NEBRASKA, RELATING TO THE EXTRA TERRITORIAL JURISDICTION OF ZONING REGULATIONS AND AMENDING THE OFFICIAL ZONING MAP TO REFLECT SAID CHANGES; REPEALING ALL ORDINANCES OR PARTS OF ORDINANCES IN CONFLICT HEREWITH AND PROVIDING FOR AN EFFECTIVE DATE.

BE IT ORDAINED BY THE MAYOR AND CITY COUNCIL OF THE CITY OF GOTHENBURG, DAWSON COUNTY, NEBRASKA AS FOLLOWS:

Section 1. A copy of Title XV, Chapter 152 Section 152.001 of the Code of Ordinances of the City of Gothenburg, Nebraska is set forth on Exhibit "A" attached hereto and incorporated herein by this reference.

Section 2. Title XV, Chapter 152 Section 152.001 of the Code of Ordinances of the City of Gothenburg, Nebraska is hereby amended to read as follows:

§ 152.001

(A) This chapter shall be known, referred to, and cited as the Zoning Ordinance of the City of Gothenburg, Nebraska.

(B) The provisions of this chapter shall apply within the corporate limits of the city, and within the territory beyond the corporate limits for a distance of up to one mile in all directions, as defined on the Official Zoning Map of the city, as the same may be amended by subsequent annexation.

Section 3. A copy of Title XV, Chapter 152 Section 152.016 of the Code of Ordinances of the City of Gothenburg, Nebraska is set forth on Exhibit "B" attached hereto and incorporated herein by this reference.

Section 4. Title XV, Chapter 152 Section 152.016 of the Code of Ordinances of the City

of Gothenburg, Nebraska is hereby amended to read as follows:

§ 152.016 OFFICIAL ZONING MAP

(A) The boundaries of the districts are shown upon a map, which is made a part hereof by reference, ["Exhibit C"] which map is designated as the "Gothenburg Zoning District Map," dated August 16, 2016, and signed by the Mayor and City Clerk and hereinafter referred to as the Official Zoning Map.

(B) The signed copy of the zoning map containing the zoning districts designated at the time of adoption of this chapter shall be maintained in the office of the City Clerk for the use and benefit of the public.

(C) (1) If, in accordance with the provisions of this chapter, changes are made in the district boundaries or other matter portrayed on the Official Zoning Map, the changes shall be entered on the appropriate part of the Official Zoning Map promptly after the amendment has been approved by the City Council, with an entry, which shall be signed by the Mayor and attested by the City Clerk, on the Official Zoning Map as follows:

"On (date), by official action of the City Council, the following change was made in the Official Zoning Map (brief description of the nature of the change)."

(2) No amendment to this chapter which involves matter portrayed on the Official Zoning Map shall become effective until after the change and entry have been made on the map.

(D) No changes of any nature shall be made in the Official Zoning Map or matter shown thereon except in conformity with the procedures set forth in this chapter.

(E) (1) In the event that the Official Zoning Map becomes damaged, destroyed, lost, or difficult to interpret, the City Council may, by resolution, adopt a new Official Zoning Map which shall supersede the prior Official Zoning Map.

(2) The new Official Zoning Map may correct drafting or other errors or omissions in the prior Official Zoning Map, but no correction shall have the effect of amending the original Official Zoning Map or any subsequent amendment thereof.

Section 4. All ordinances or parts of ordinances in conflict herewith are hereby repealed.

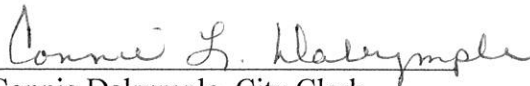
Section 4. This ordinance shall become effective from and after its passage, approval and publication in pamphlet form as required by law.

Passed and approved this 16th day of August, 2016.

CITY OF GOTHENBURG, DAWSON
COUNTY, NEBRASKA

BY Joyce E. Hudson
Joyce Hudson, Mayor

ATTEST:



Connie Dalrymple, City Clerk

APPROVED AS TO FORM:

Michael L. Bacon
City Attorney

Exhibit "A"

§ 152.001 TITLE; JURISDICTION.

(A) This chapter shall be known, referred to, and cited as the Zoning Ordinance of the City of Gothenburg, Nebraska.

(B) The provisions of this chapter shall apply within the corporate limits of the city, and within the territory beyond the corporate limits for a distance of one mile in all directions, as defined on the Official Zoning Map of the city, as the same may be amended by subsequent annexation.

(Ord. 905, passed 1-20-2015)

Exhibit "B"

§ 152.016 OFFICIAL ZONING MAP.

(A) The boundaries of the districts are shown upon a map, which is made a part hereof by reference, which map is designated as the "Gothenburg Zoning District Map," dated May 21, 1996, and signed by the Mayor and City Clerk and hereinafter referred to as the Official Zoning Map.

(B) The signed copy of the zoning map containing the zoning districts designated at the time of adoption of this chapter shall be maintained in the office of the City Clerk for the use and benefit of the public.

(C) (1) If, in accordance with the provisions of this chapter, changes are made in the district boundaries or other matter portrayed on the Official Zoning Map, the changes shall be entered on the appropriate part of the Official Zoning Map promptly after the amendment has been approved by the City Council, with an entry, which shall be signed by the Mayor and attested by the City Clerk, on the Official Zoning Map as follows:

"On (date), by official action of the City Council, the following change was made in the Official Zoning Map (brief description of the nature of the change)."

(2) No amendment to this chapter which involves matter portrayed on the Official Zoning Map shall become effective until after the change and entry have been made on the map.

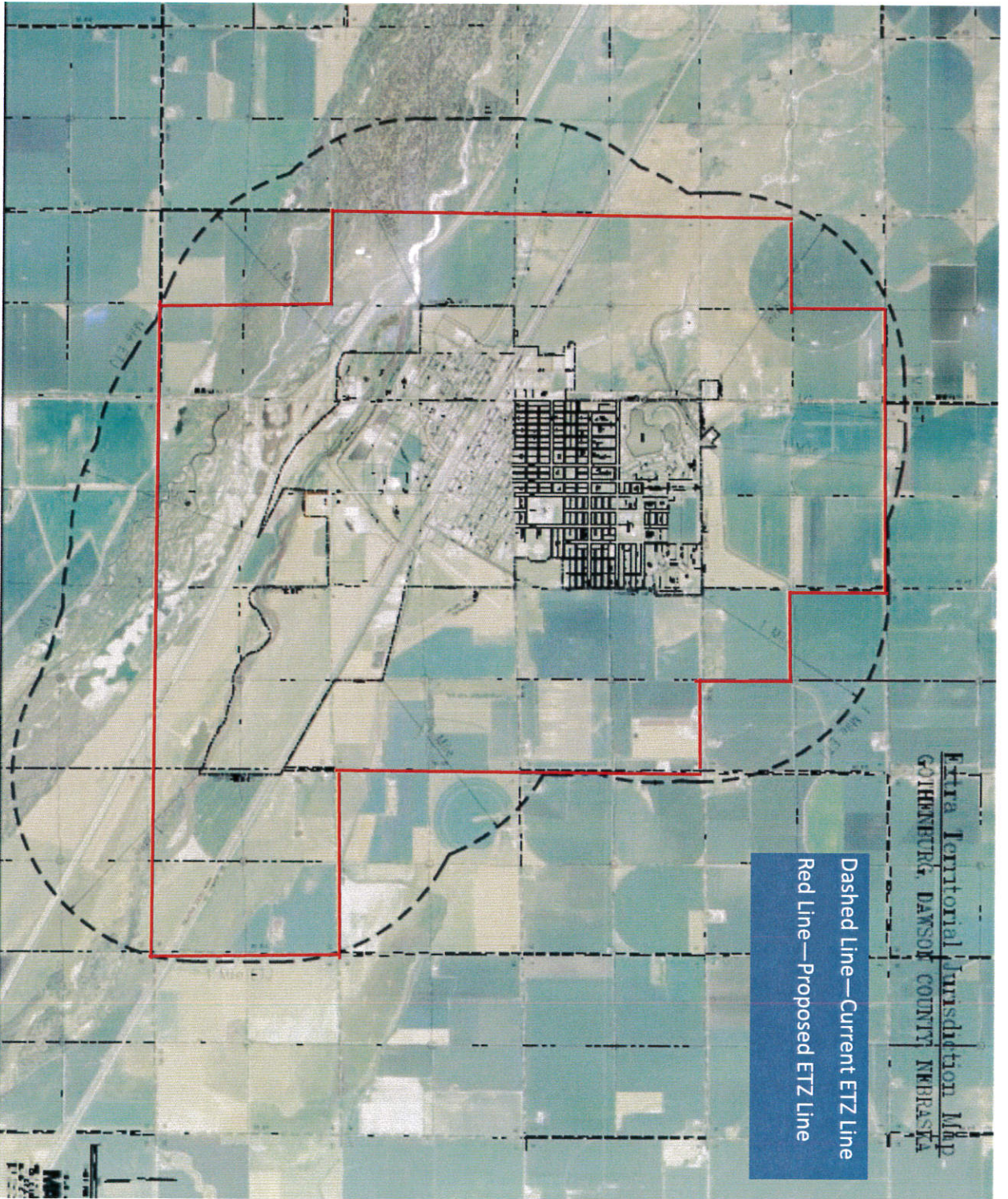
(D) No changes of any nature shall be made in the Official Zoning Map or matter shown thereon except in conformity with the procedures set forth in this chapter.

(E) (1) In the event that the Official Zoning Map becomes damaged, destroyed, lost, or difficult to interpret, the City Council may, by resolution, adopt a new Official Zoning Map which shall supersede the prior Official Zoning Map.

(2) The new Official Zoning Map may correct drafting or other errors or omissions in the prior Official Zoning Map, but no correction shall have the effect of amending the original Official Zoning Map or any subsequent amendment thereof.

(Ord. 905, passed 1-20-2015)

Exhibit "C"
Attach a copy of Official Zoning Map dated _____, 2016



Extra Territorial Jurisdiction Map
COHENBURG, DAWSON COUNTY, NEBRASKA

Dashed Line—Current ETZ Line

Red Line—Proposed ETZ Line