

RESOLUTION 2025-7

WHEREAS, the City of Gothenburg, Nebraska, has prepared a Master Trail Plan to facilitate safe foot and bicycle travel throughout the community; and

WHEREAS, it is appropriate for the City Council, for purposes of planning for the development and maintenance of a trail system, to establish a policy for guidance for such development and future maintenance; and

WHEREAS, the City Administration has prepared the Gothenburg Trail Maintenance and Development Policy, attached hereto; and

WHEREAS, the City Council of Gothenburg has reviewed the Gothenburg Trail maintenance and Development Policy:

NOW, THEREFORE, BE IT RESOLVED BY THE MAYOR AND CITY COUNCIL OF THE CITY OF GOTHENBURG, DAWSON COUNTY, NEBRASKA AS FOLLOWS:

Section 1. The Gothenburg Trail Maintenance and Development Policy attached hereto and incorporated herein by reference, is approved and is hereby adopted to provide guidance for the development and maintenance of the Master Trail Plan.

Passed and approved this 6th day of May, 2025.



CITY OF GOTHENBURG,
DAWSON COUNTY, NEBRASKA

Verlin Janssen
Verlin Janssen, Mayor

ATTEST:

Misty Bussinger
Misty Bussinger, City Clerk

APPROVED AS TO FORM:

Michael L. Bacon
Michael L. Bacon, City Attorney
Colten C. Venter, Assistant City Attorney

Gothenburg Trail Maintenance and Development Policy

Introduction

The City of Gothenburg recognizes the importance of a well-maintained trail system to enhance the safety and mobility of walkers, bicyclists, and runners within the community. This policy provides a clear framework for the development, maintenance and snow removal responsibilities associated with various types of trails as outlined in the Gothenburg Trail Master Plan. Any decisions concerning the trail master plan are at the discretion of the City Council and according to city maintenance and snow removal policies.

Trail types and development costs

The trail system in Gothenburg includes three types of trails:

1. **Neighborhood Sidewalks:** These are local sidewalks intended for pedestrian use within residential and commercial neighborhoods. The developer or homeowner is responsible for the cost of neighborhood sidewalks.
2. **Collector Trails:** These trails connect neighborhood sidewalks to arterial trails, are usually over 5 feet wide and are designed to facilitate movement between different areas of the city. The city is responsible for the cost of developing collector trails.
3. **Arterial Trails:** These trails serve as the main corridors for moving people through the entire community and are usually over 6 feet wide. The city is responsible for the development of arterial trails.

Maintenance responsibilities

1. Neighborhood Sidewalks

The adjoining property owner is responsible for the maintenance and snow removal of neighborhood sidewalks. This includes ensuring that sidewalks are clear of snow, debris, and vegetation to maintain safe access.

2. Collector Trails

Maintenance and snow removal for collector trails designated in the Gothenburg Trail Master Plan are the responsibility of the City of Gothenburg. This includes regular inspections, repairs, and snow clearance (according to the city's snow removal policy) to ensure safe and accessible paths for users.

3. Arterial Trails

The City of Gothenburg will also handle the maintenance and snow removal of arterial trails as specified in the trail master plan. This includes regular

inspections, repairs, and snow clearance (according to the city's snow removal policy) to ensure safe and accessible paths for users.

Public amenities

Other public amenities associated with the trail system, including, but not limited to:

- Signage
- Trailhead facilities
- Water fountains

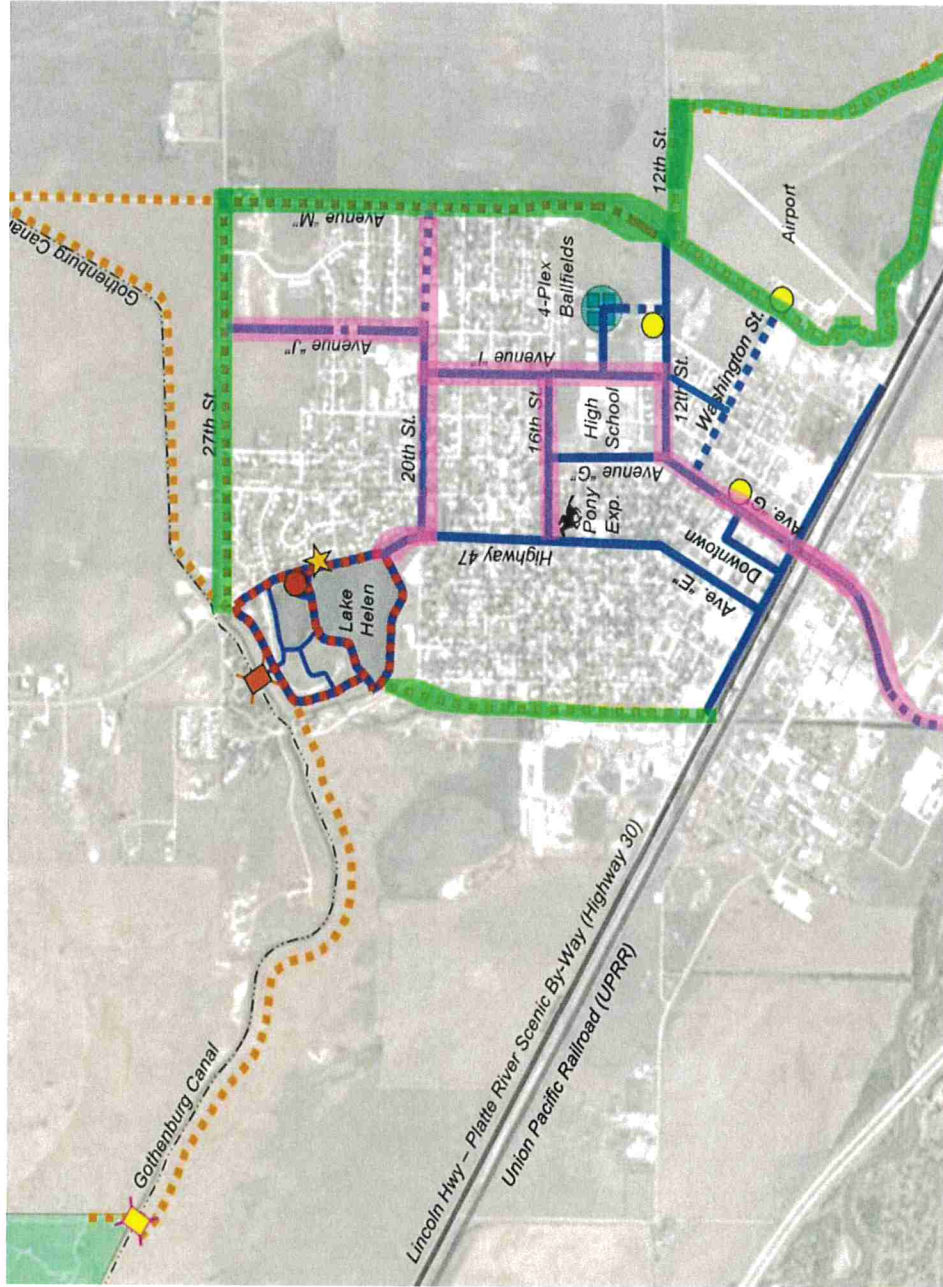
These amenities, once approved by the City Council, will be maintained by the City of Gothenburg. This responsibility includes regular inspections, repairs, and updates as necessary to support the functionality and aesthetic value of the trail system.

Designation of Trail Sections

The City Council shall periodically review and designate all sections of the trail system to ensure that maintenance responsibilities are aligned with the best interests of the citizens of Gothenburg. This may include adjustments based on community feedback, trail usage, and changing needs within the community.

Conclusion

The Gothenburg Trail Maintenance Policy aims to ensure a safe and enjoyable trail experience for all users within the city. By delineating maintenance responsibilities and emphasizing community well-being, Gothenburg is committed to fostering an accessible trail network for walkers, bicyclists, and runners.



Legend

- Existing 4', 5' & 6' Sidewalk/Trail
- Future 4', 5' & 6' Sidewalk/Trail
- Future Aggregate Trail
- Future 8' Wide Trail
- Existing Bridge
- Proposed Structure
- Existing Trailhead
- Proposed Trailhead
- HAWK - High Intensity Activated CrossWalk Beacon Signal

Arterial Trails
Collector Trails



Revised: 10/23/2024